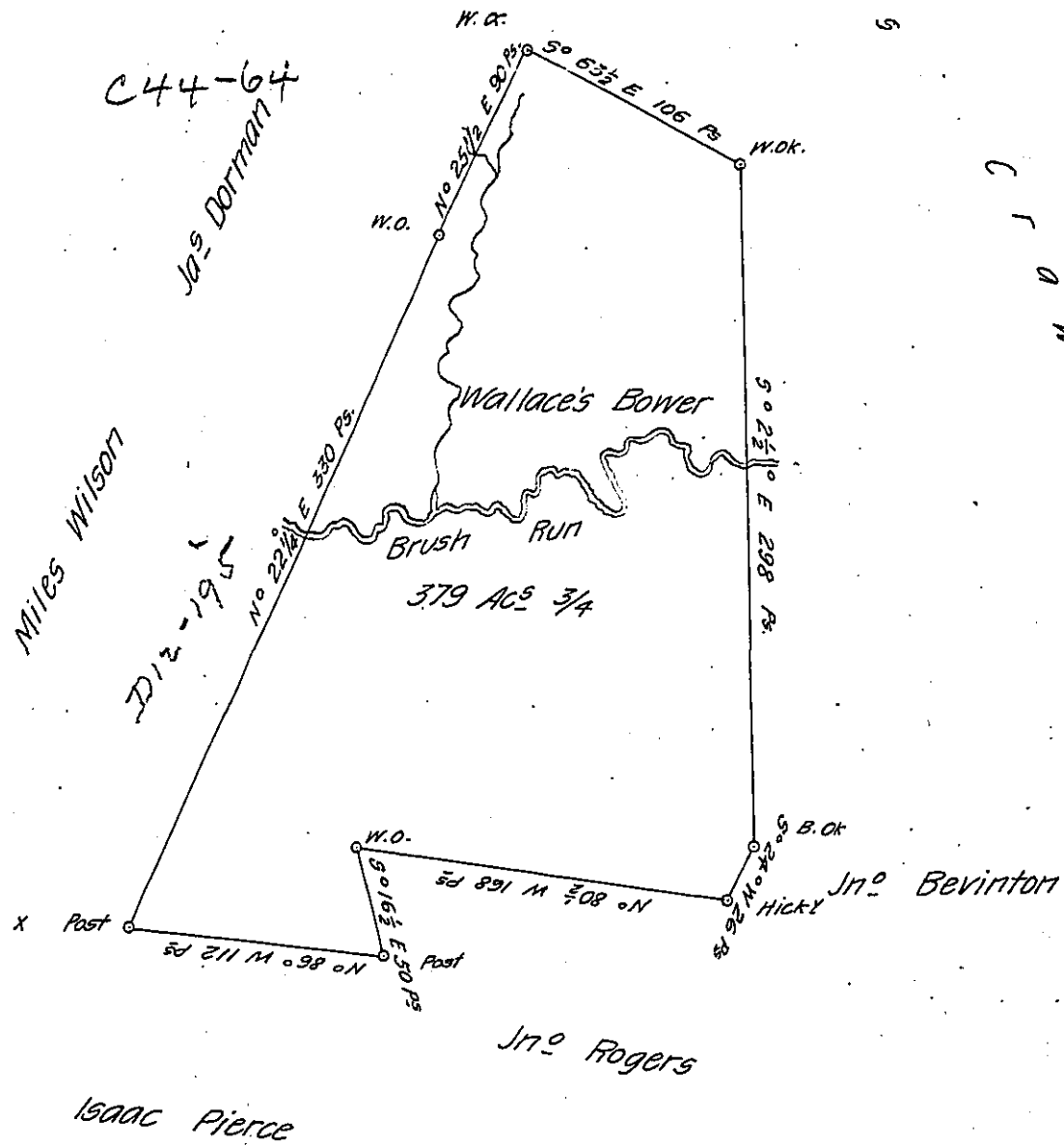


Note this survey is conveyed to Robt Wallace.



(Smith Township) A Draught of a survey called "Wallace's Bower"
 Situate on the Waters of ~~Brush~~ ^{Raccoon} Creek in Washington County contain^g 379 3/4 Ac^s
 and the usual Allow^{ce} for Highways &c. executed Jan^y 31st 1787 in Pursuance of
 a Warrant granted to Wm Wilson for 400 Ac^s dated Jan^y 14th 1785

Presley Nevill }
 Matt^w Ritchie } Dfs.

Dan^l Brodhead Esq^r
 S. Gen^l

IN TESTIMONY that the above is a copy of the original remaining on file in
 the Department of Internal Affairs of Pennsylvania, made
 conformably to an Act of Assembly approved the 16th day of
 February 1833, I have hereunto set my hand and caused
 the Seal of said Department to be affixed at Harrisburg,
 this twenty third day of May 1907

Henry Howell
 Secretary of Internal Affairs.